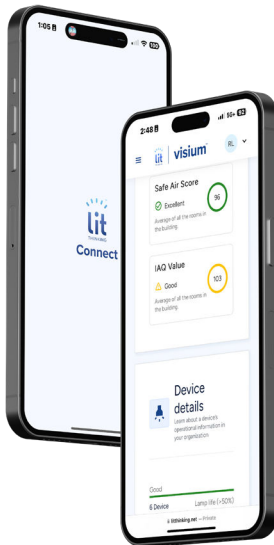




# Lit Thinking™ App

## Visium 1™ Commissioning Instructions & Account Management Set Up



Scan QR Code for product information  
and other helpful resources.

# Connecting Visium

Follow the simple steps below to connect your Visium 1 devices to the internet via the Lit Thinking Connect App.

## Before starting:

- Ensure all Visium devices are installed in their final location.
- Ensure each device is powered-on and within range of a WiFi access point.
- Have access to a WiFi and Bluetooth enabled smartphone or tablet.
- Have your Login Credentials ready (provided by Lit Thinking Admin).
- Note and record each device's serial number and its corresponding location prior to installation.

## 1 Download Lit Thinking Connect App

Download Lit Thinking Connect App from the Apple App Store or Google Play Store.

**Note:** Grant necessary permissions for Bluetooth as needed.



## 2 Sign in to Connect App

Sign in to Connect App with provided credentials.

The screenshot shows the login interface of the Lit Thinking Connect app. At the top is the app logo. Below it, the text reads "Login" and "To connect Visium, log in to your account". There are two input fields: "Email ID" and "Password". The password field has a small eye icon to toggle visibility.

## 3 Connect Visium Devices

Select device and follow on-screen steps to connect. LED indicator will be blinking white during setup.



## 4 Connection Complete!

The LED indicator will turn solid green when done. Add custom name to your device as desired. Repeat Step 3 as needed.



# Account Setup and Management



Once your Visium devices are all connected, it's time to set up your account. Follow the below instructions to view key metrics and manage your account online.

## 1 Log into Lit Thinking App

Visit <http://litthinking.net/> or scan QR Code below. Sign in with provided credentials.

Visium By Lit Thinking  
A Cleaner and Safer Indoor Air Solution  
A New Way to Clean

**Login to your account**

Email ID  
Your email Id

Password  
Your Password



## 2 Initial Setup

Upon initial login, follow on-screen steps to setup and define installation space.

**About Campus**

New Campus name  
Enter campus name here

Address  
3259 Progress Drive

City  
Orlando

Zip Code  
32826

## 3 Assign Visium Devices

On Dashboard, select "Add Device" and follow on-screen steps to assign each device to a space. Confirmation will appear when device is successfully assigned. Repeat Step 3 as needed.

**You have 1 devices which are yet to be mapped to a room!**  
All devices need to be added to a room for Data Insights including safe air score and IAQ scores display properly

**Add device**

**2**  
Campus

# Control, Monitor, and Support

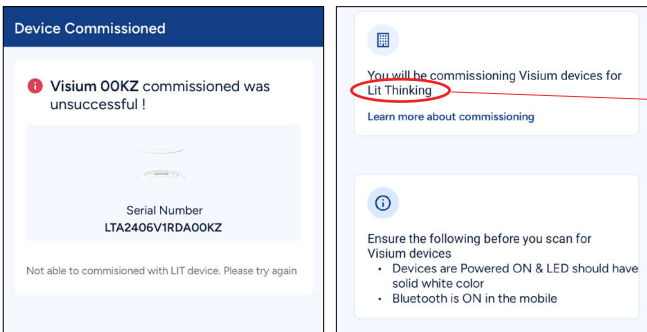
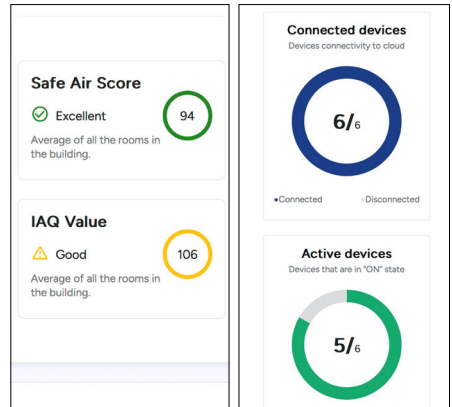


## Monitor and Control

Monitor your space's Indoor Air Quality (IAQ), view key metrics, and control devices through the Lit Thinking App dashboard.

## Tips and Troubleshooting

- Network Requirements: Ensure WiFi network is 2.4GHz or better
- If device not visible in Lit Thinking App:
  - Ensure device is energized and within Wifi range
  - Power-cycle the device and restart the App.
  - Contact Support for additional assistance.
- If device commissioning is unsuccessful:
  - Confirm organization is correct on the Connect App home screen.
  - Log out and sign back in to Connect App to try again.
  - Remove and download Connect App from App/Play Store to try again.
  - Ensure WiFi signals are strong for device and phone/tablet during process.



Organization Present -  
Confirm Organization

## Safety

- Follow all safety guidelines from the installation guide provided with the devices to ensure safe operation.

## Support

- For additional help, contact Lit Thinking support at [customerservice@litthinking.com](mailto:customerservice@litthinking.com) or (321) 299-0100.
- Visit [www.litthinking.com/installation](http://www.litthinking.com/installation) for access to the product spec sheet, installation guide, and other helpful information.